

# VIDEOCADE 2004 BRICKYARD/CLOWNS OPERATING INSTRUCTIONS

## BRICKYARD (1 to 4 players)

Insert Videcade 2004 into your unit and press the Reset button to get the game selection displayed on your television screen.

The object of BRICKYARD is to eliminate as many bricks as possible by bouncing a ball off a paddle upward into the bricks. The green bricks are worth 3 points, the blue and red bricks are worth 5 points. The player who eliminates the last brick is given an additional 50 points and the brickyard resets.

Press (1) on the keypad to play BRICKYARD. The Professional Arcade will ask you to:

### **"CHOOSE DIFFICULTY"**

1. PROFESSIONAL — small paddle, fast ball
2. ADVANCED — small paddle, slow ball
3. INTERMEDIATE — large paddle, fast ball
4. BEGINNER — large paddle, slow ball
5. CUSTOM — allows selection of different difficulty for different players.

After choosing the difficulty level, the Professional Arcade will ask you to:

### **"ENTER # OF PLAYERS"**

You will then be asked to:

### **"ENTER # OF BALLS"**

When playing less than 10 balls, you must enter (=) to start play.

### **Hand Controls**

Knob . . . . .	Moves paddle left to right
Trigger . . . . .	Releases ball into playing area
Joy Stick . . . . .	No function

## **CLOWNS (1 to 4 players)**

Clowns plays much like BRICKYARD with the exception that you are catapulting a clown into the air off a teeter-totter to break balloons.

Green balloon . . . . .	1 point
Red balloon . . . . .	3 points
Blue balloon . . . . .	5 points

The player that eliminates the last balloon in any row is awarded a bonus and that row of balloons resets.

Green balloons . . . . .	20 point bonus
Red balloons . . . . .	40 point bonus
Blue balloons . . . . .	60 point bonus

Press (2) on the keypad to play CLOWNS. The Professional Arcade will ask you to:

**"ENTER # OF PLAYERS"**

After the number of players has been decided, the Professional Arcade will ask you to:

**"ENTER # OF CLOWNS"**

When playing less than 10 clowns, you must enter (=) to start play.

#### Hand Controls

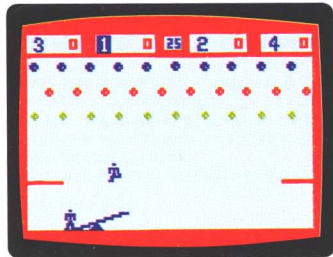
Knob . . . . . Moves teeter-totter left to right  
Trigger . . . . . Releases clown into playing area  
Joy Stick . . . . . No function

**MANUFACTURED BY:**  
Bally Consumer Products Division  
Bally Manufacturing Corporation  
10750 W. Grand Avenue  
Franklin Park, IL 60131

# *Bally*® PROFESSIONAL **VIDEOCADE™ 2004**



BRICKYARD



CLOWNS